

2020- 2029

WWF

2020 8

.....	1
.....	1
.....	6
.....	8
.....	11
.....	11
.....	13
.....	15
.....	15
.....	16
.....	17
.....	17
.....	17
.....	19
.....	19
.....	20
.....	20
.....	21
.....	24
.....	24
.....	25
.....	26
.....	28
.....	28
.....	28
.....	29
.....	30
.....	31
.....	33
.....	33
.....	33
.....	34
.....	35
.....	36
.....	37
.....	37
.....	37
.....	38
.....	38
.....	41
.....	41
.....	41
.....	45



"

"

2009 3

4

4. 77

18. 82

15. 15

366. 8

3. 67

108

366. 8

1906

110

1952

1952 5

3

1952 11 ( )

1953

1954

1955 8

1957

1954

3

1955

8

1957

5

1959

1960 1 2



3

4

5

6

7

"

"

8

9

10

(

109° 26 24    109° 44 41    19° 20 42    19°  
51 06

" "

109° 33 35    19° 34  
12                    120

22

10 15

23.3 6 7 27.7  
1 16.9 40.3 1.1  
1584 5 10 85% 11  
4 2239  
4  
13

16.5 25cm 60 10cm  
1.730± 0.994 0.074± 0.055 84.512  
± 41.54 PPM  
9.550± 12.34 PPM 70.752  
± 75.622 PPM

644 426 128

450

530

20

( " " )

10

CITES

	2019		23.04		97.53
		31.50		66.03	
				13.35%	
5.99%		7.36%		92.07	
	52.9%			20	
			93%		
7%					
		940	760		
	305	462	173		
4700		96.3%		1.2%	
	2%	0.5%			
			5.4		
97%		1%	1.5%	0.5%	
	2019		357.64		
		6.5%		134.14	
	2.3%		37.94		4.3%
	15.21		2.3%		22.78
		5.0%		185.56	
10.1%				37.5%	10.6%
51.9%			39065		
	5663		5.6%		

	2019	9526.44	
16.77%	8958	472	5.01%
	3.56	23888	

S306 S308

	2019		
	2015	2030	2018
190133.3		184557.0	178693.6
		5616.8	246.6
172.1		74.5	
5576.4		5245.3	11.7
319.3		94.0%	96.7%
			4
	5		
			2
	30397.5	16.0%	
	41368.2	21.8%	
	37698.3	19.8%	
	39218.0	20.6%	
	41451.3	21.8%	

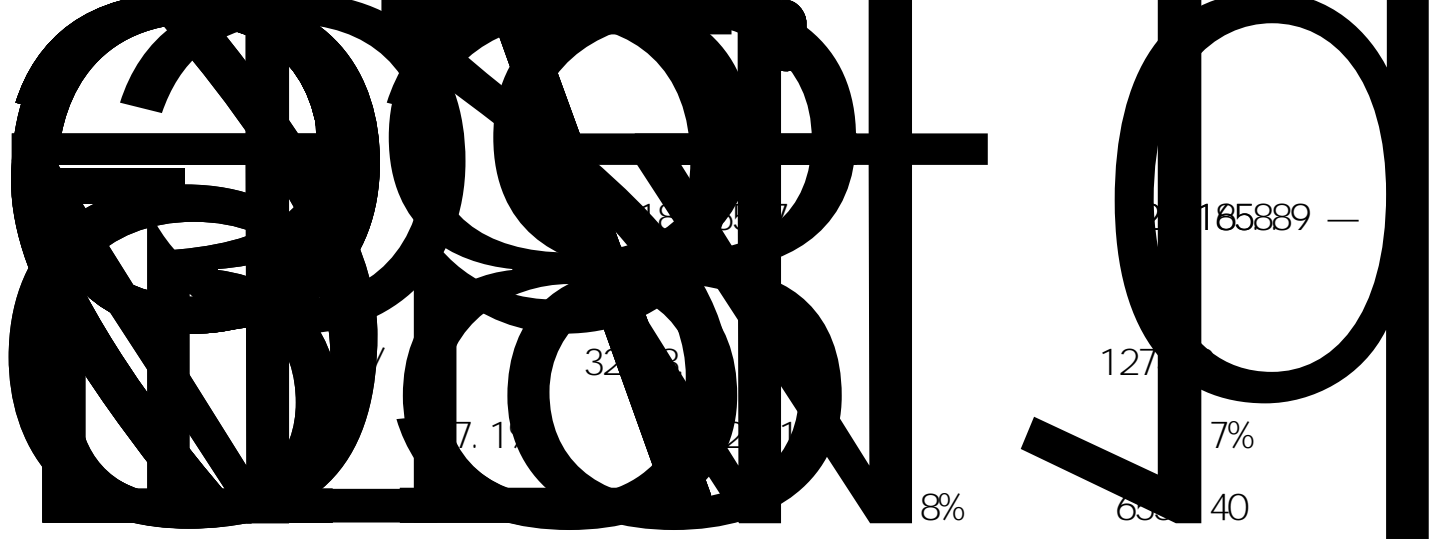
	190133.3	184557.0
97.1%	5576.4	2.9%
184557.0		
	178693.6	96.8%
5616.8		3.0%
246.6		0.1%
5576.4		
5257.0		94.3%
319.3		5.7%
	184557.0	
	13382.6	7.3%
12803.6		6.9%
67.7		0.04%
12735.9	6.9%	578.9
	0.3%	
	171174.4	92.7%

	189555. 7		
1224185. 89		183645. 5	
1224185. 89		5910. 2	
	178693. 6		97. 3%
1191442. 30		97. 3%	
4951. 9	2. 7%	32743. 58	
2. 7%			
	5616. 8		
95. 0%		293. 4	
5. 07%			
	189555. 7		1224185. 89
	189555. 7		1224185. 89
	37. 0	0. 02%	350. 34
	0. 03%		
	189518. 7	99. 98%	
1223835. 55		99. 97%	

	189555.7		1224185.89
	13382.6	7.1%	92875.11
	7.6%		
	176173.2	92.9%	
1131310.78	92.4%		

	189555.7		1224185.89
	13382.6	7.1%	92875.11
	7.6%		
	176173.2	92.9%	
1131310.78	92.4%		

	189555.7		1224185.89
	188244.5	99.31%	
1223835.55	99.97%		
	1274.2	0.67%	
	37.0	0.02%	350.34
	0.03%		



0.5%		
10928.6	5.8%	90102.71
7.4%		
68658.9	36.2%	416417.53
34.0%		
76157.7		

1

2

3

4

1

2

3

2020 2024 2025 2029 10 2

2019 12 28

2018 3 19

2014 4 24

2018 12 29

2019 8 26

2014 7 29

2017 10 7

2016 2

6

( [2003] 9

)

LY/T 2007-2012

LY/T 2008-2012

GB/T 15776-2016

GB/T 15781-2015

LY/T 1646-2005

GB/T 18337.3-2001

2009 214

2004 251

LY/T 1594-2018

[2007] 10

FSC

FSC-STD-CHN-01-2016

1-0

2013

2013 6 4

NY/T 221-2016

NY/T 1088-2006

2013 8

(2013 8 )

( )

(2014 1 )

(2009 3 )

( 2015-2030)

"

"

"

"

"

"

3.1

### 3.1

	2020 2024		2025 2029		
	1				
2					
3		0.5%		0.5%	
4		0.1%		0.1%	
5	● ● ● ● HCV	80%	● ● ● ● HCV	80%	
6		1410	6%	1410	6%
7		5	10	15	

8	20	20
9	3000	3000





319.3

13382.6

67.7

12735.9

578.9

37.0

13345.5

176431.4

176173.2

74.5

174899.0

1274.2

319.3

"

"

"

"

"



FSC

FSC

7- 20- 59

PR107

7- 33- 97

1

30

5

1

15

"

"







1587006

[ 2013 ] 114

+

“

18.82

15.15

366.8

3.67

108

" "

" "

2015 2019

9432

6974

7983

9430

8958

8000

8500

2

17

10

5

11

" "

' '

30%

1

2

,

2

3

4

"

ω ρ

ê

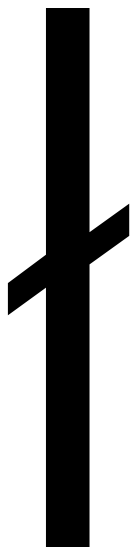
ω

5

"

"

ρ



9

1

2

3

4

5

10

6

6.1

50

6.2

6.3

7

7.1

50

7.2

7.3

3

8

8.1

2

3

2

+2

3

2

8.2

8.3

"

"

"

"

— —

— —

9

10

12 14

3

11

12

13

14

14. 1

14. 2

14. 3

14. 4

35961

399749

279824

3596

39975

27982

1

1.1

1.2

1.3

1.4

1.5

2

2.1

2.2

2.3

2.4

2.5

2.6

FSC

**1**

1.1

1.2

1.3

**2**

2.1

2.2

2.3

2.4

2.5

**1**

1.1

1.2

1.3

1.4

**2**

2.1

2.2

2.3

2.4

2.5

2.6

**1**

1.1

1.2

1.3

1.4

1.5

1.6

**2**

2.1

2.2

2.3

2.4

2.5

1

1.1

1.2

2

2.1

2.2

2.3

2.4

2.5

1

1.1

1.2

2

2.1

2.2

2.3

1

1.1

1.2

2

2.1

2.2

2.3

2.4

2.5







60 70

44

70

3

2

1329

66.5

68.7

6

		125448		12544.8	
	10		100		2020
1000		6%		13181	
	188637		80		
100		16977			
	36220	1350			4890
		259139		600	

	15548		1587006
280		44436	
		3924	20
	200		200
2000		20	200
	1000	10000	
		130741	13074.1
	82500		1.4
	115500		279824
500		13991	
1250			
		5293	529.3









2029

1.

2.

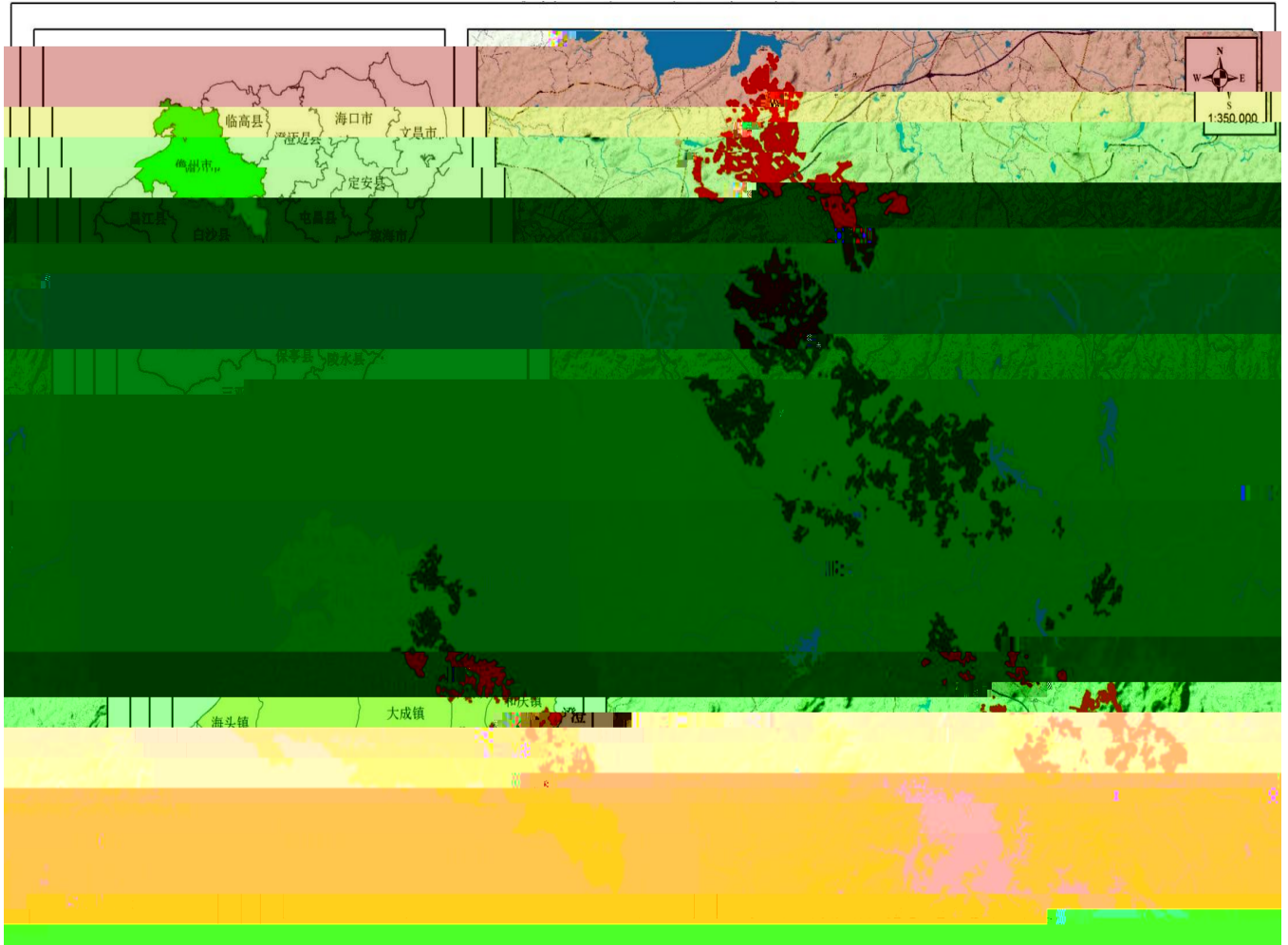
3.

4.

5.

6.

7. FSC



海胶集团FSC-FM认证单位（西联分公司）林地分布图

